

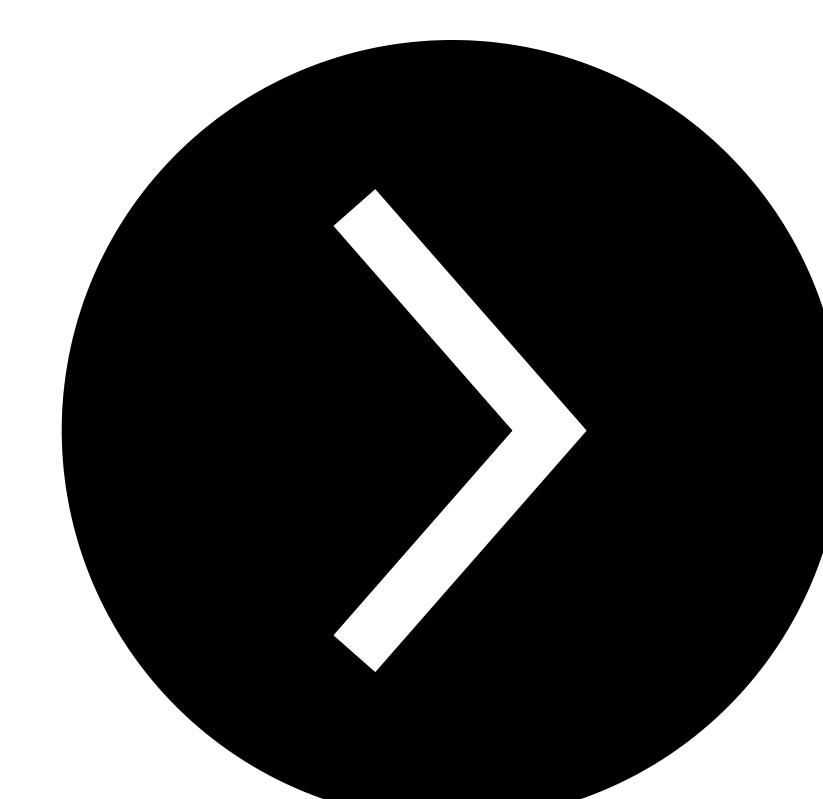
Social Innovation Spotlight



Episode 14

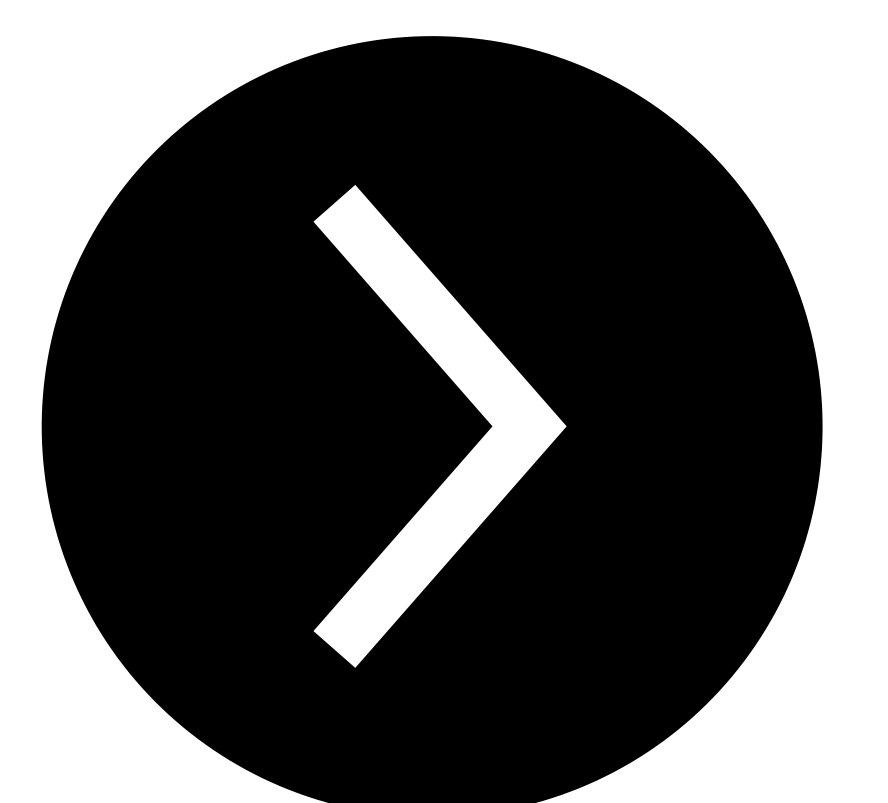
From innovative ideas to sustainable business models

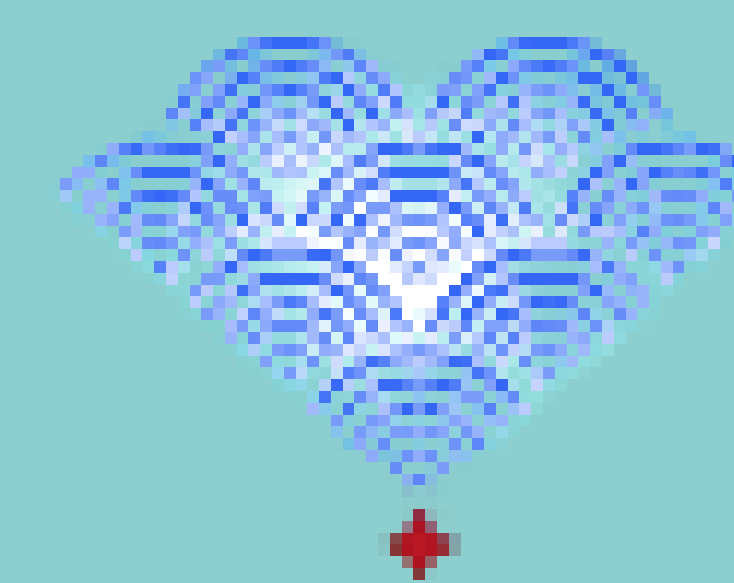
IKIGAI Social Hub is an acceleration program that supports young people and social organizations in transforming their social ideas into sustainable business models.



The challenge

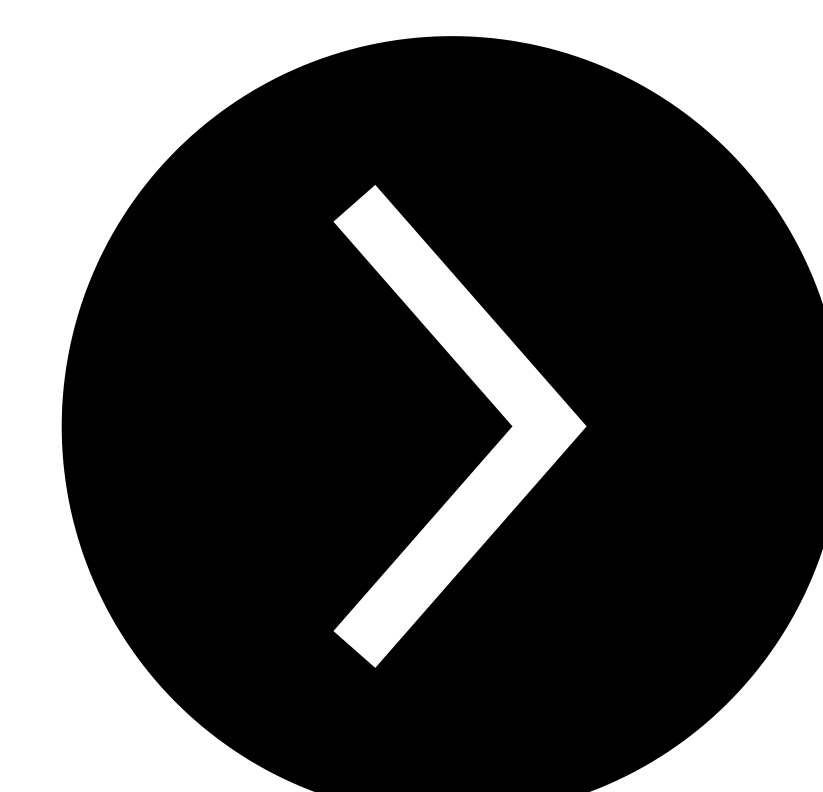
- Many ideas lack the entrepreneurial skills needed to be transformed into economically sustainable projects.
- Limited access to support programs tailored for social economy initiatives.
- Weak connections between innovation, territory, and community, limiting engagement with other ecosystem actors.
- Difficulty in validating ideas and mobilizing resources, including funding, investors, and impact measurement.





The idea

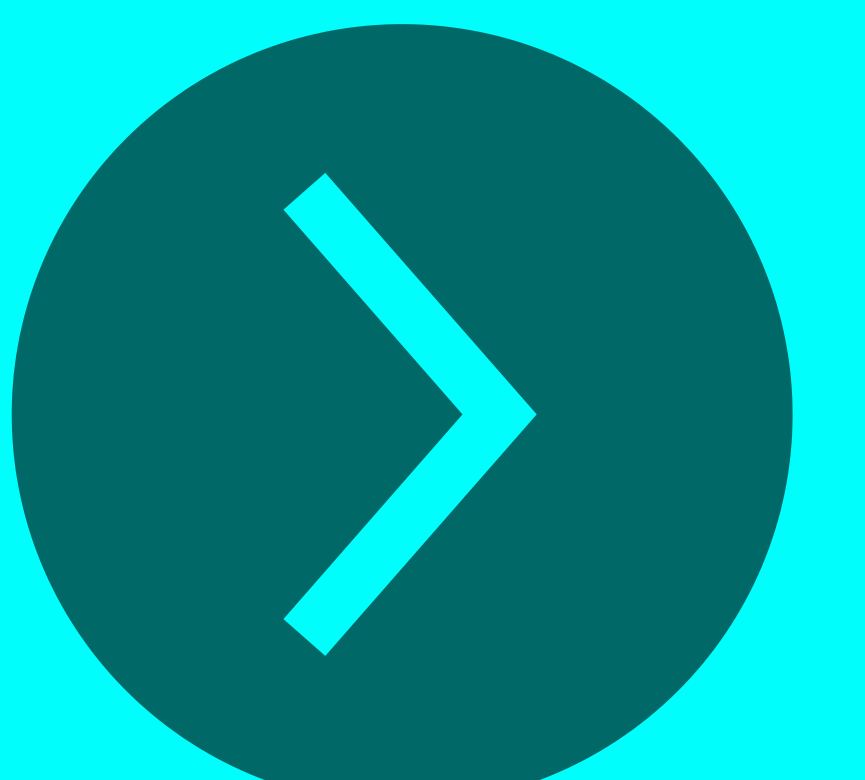
IKIGAI Social Hub is an acceleration program designed by Pluriversum and EURICSE to help young people and organizations operating within the social economy develop innovative ideas and transform them into sustainable business models.



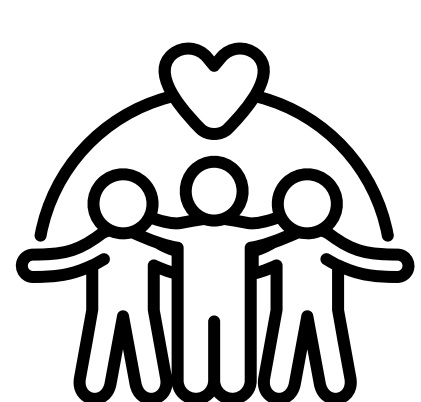


What's innovative here?

- **Integrated pathway:** practical workshops, individual coaching sessions, and group activities.
- **Collaborative networks:** connects social start-ups with mentors, investors, and local stakeholders to create territorial synergies.
- **Hybrid model:** adapts business innovation tools and methodologies to the social context, creating a replicable framework.

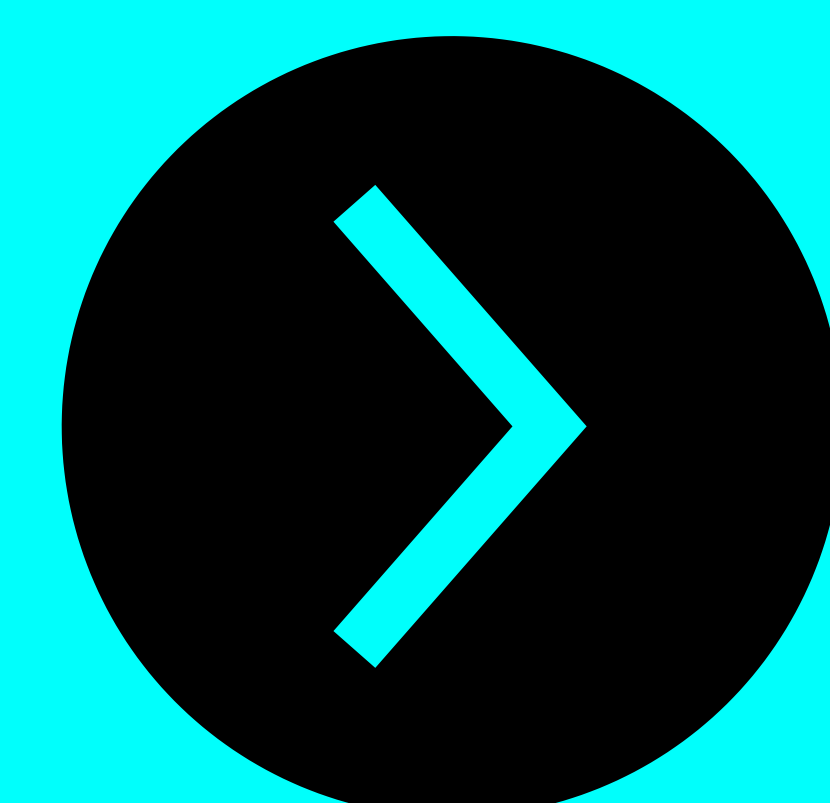


Impact so far

7 thematic workshops for young people and organizations, supporting skills development. 

50+ hours of one-to-one mentoring for participants. 


7 sprints, including planning sessions and demo days. 



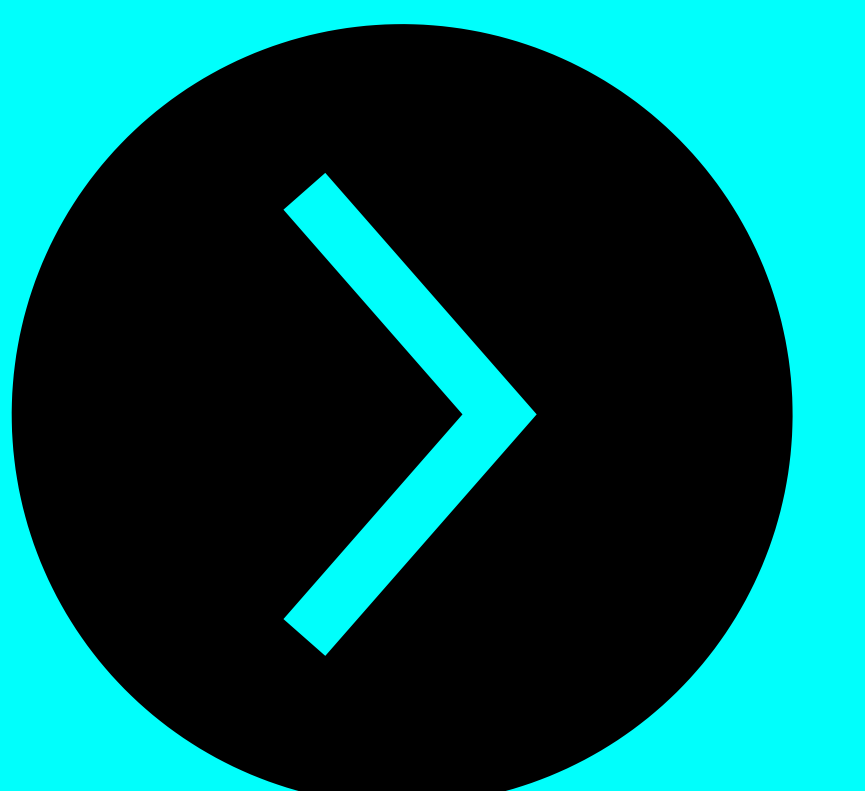
Impact so far

8 start-ups supported through the program. 

€48,000 in grants awarded. 

A research study on youth, activism, and the social economy in Tuscany. 

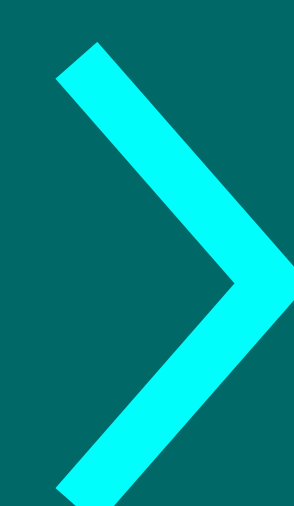
**Economic
&
systemic**





What you can replicate

- Offer structured mentoring and workshops for social projects.
- Connect young people and social entrepreneurs with mentors, investors, and local stakeholders.
- Encourage active learning, rapid prototyping, and iterative testing of ideas.
- Adapt traditional start-up tools to create frameworks that can be easily transferred to other social entrepreneurship support programs.



Social Innovation Spotlight

Episode 14

**If this case sparked an idea,
don't let it stay on this slide.**

**Adapt it, remix it, and bring social
innovation to life where you are.**

Follow Seed2Scale for more
Social Innovation Spotlight episodes



Co-funded by
the European Union

Social Innovation 
Initiative

seed2scale