

# seed

Social innovation **e**cosystem **d**evelopment

This project has received financial support from the European Union Programme for Employment and Social Innovation (EaSI) (2014-2020) and the European Social Fund under Grant Agreement VP/2020/010/0139. For further information please consult: <http://ec.europa.eu/social/easi> and <http://ec.europa.eu/esf>

[www.seedeuproject.eu](http://www.seedeuproject.eu)



Co-funded by  
the European Union

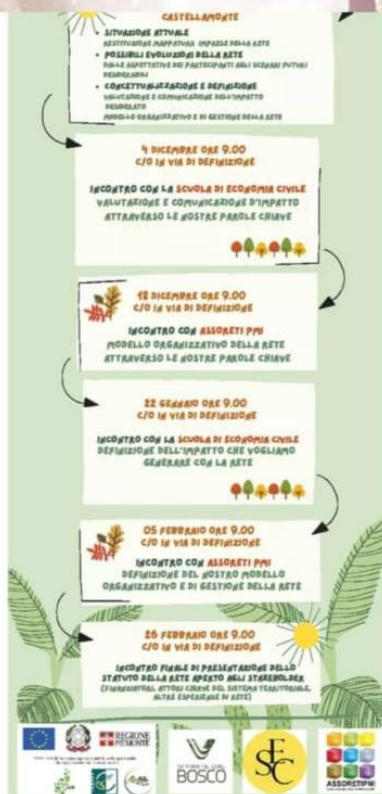


Accompanied by experts from the School of Civil Economy and Assoreti SMEs, foresters, nature guides, farmers, livestock breeders, craftsmen, architects, educators and many other professionals are working with the aim of creating a network of enterprises that puts the common good of the forest at the centre of their work and that, through their actions, can contribute to combating climate change

This project has received financial support from the European Union Programme for Employment and Social Innovation (EaSI) (2014-2020) and the European Social Fund under Grant Agreement VP/2020/010/0139. For further information please consult: <http://ec.europa.eu/social/easi> and <http://ec.europa.eu/esf>



# Le tappe



**Establishment path from 2016 to 2022, as a gradual consolidation of a Piedmontese timber supply chain with high organisational biodiversity.**

## Research of the organisational model

- Network contract instrument (object and subject),
- Codatoriality (how a formal element becomes strategic)
- Network contract subject Benefit

This project has received financial support from the European Union Programme for Employment and Social Innovation (EaSI) (2014-2020) and the European Social Fund under Grant Agreement VP/2020/010/0139. For further information please consult: <http://ec.europa.eu/social/easi> and <http://ec.europa.eu/esf>



# Le tappe



## Definition of impact

- The internal productive dynamic (internal impact indicators)
- The assumption of a socio-political role (gradual assumption of a transformative intentionality with respect to the external context)
- **Importance of language**
- Need for the assumption of a strategic political role in local development

This project has received financial support from the European Union Programme for Employment and Social Innovation (EaSI) (2014-2020) and the European Social Fund under Grant Agreement VP/2020/010/0139. For further information please consult: <http://ec.europa.eu/social/easi> and <http://ec.europa.eu/esf>



# Le tappe



## Evolutions

- The Forest Agreements of the National Forestry Strategy
- The network tool vs. the individual path

This project has received financial support from the European Union Programme for Employment and Social Innovation (EaSI) (2014-2020) and the European Social Fund under Grant Agreement VP/2020/010/0139. For further information please consult: <http://ec.europa.eu/social/easi> and <http://ec.europa.eu/esf>



Co-funded by  
the European Union